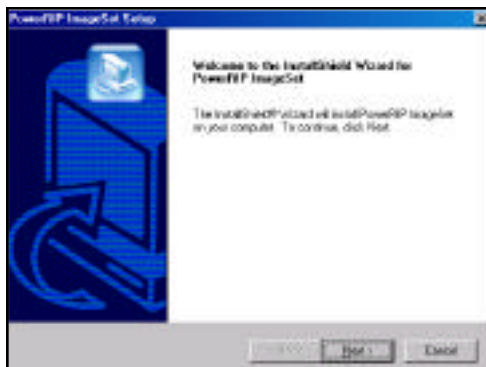


# Installing PowerRIP ImageSet

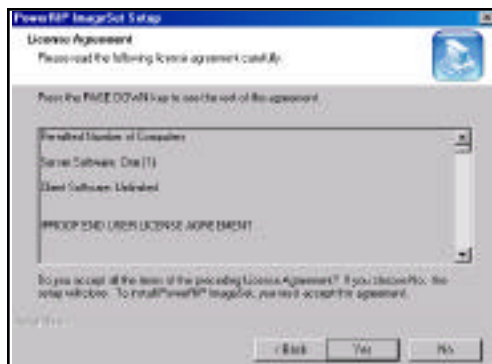
## Installing PowerRIP ImageSet

PowerRIP ImageSet software supports Windows XP and Windows 2000. PowerRIP ImageSet does not support Windows 95, 98, NT or Me. Printing to PowerRIP ImageSet from remote workstations is supported from all version of Windows as well as Mac OS.

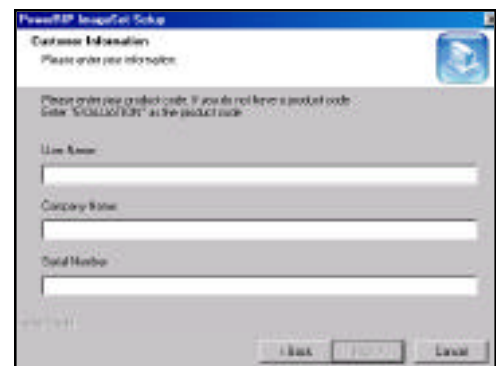
1. Turn on your computer. If it is already on, check the TaskBar to make sure that you have no applications running. If you do, exit them.
2. Insert the PowerRIP ImageSet CD into your CD-ROM drive. If auto-play is enabled, the **PowerRIP ImageSet** splash screen will display. Click **Install/Remove/Repair PowerRIP ImageSet**. If this screen does not appear, open My Computer on your Windows Desktop, then open the CD-ROM. Double-click on the file named "Setup.exe." The **PowerRIP ImageSet Setup** dialog will display. Click **Next**.



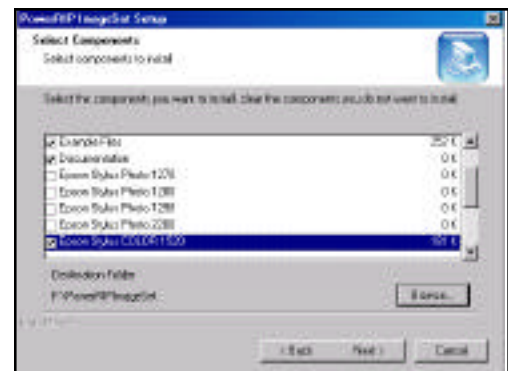
3. The **Software License Agreement** dialog will display. Click **Yes** if you agree.



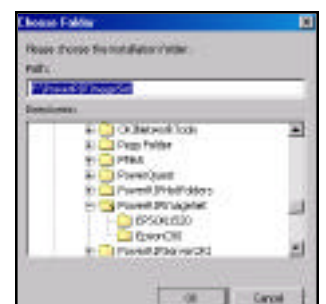
4. The **Customer Information** dialog will display. Type the User Name and Company Name if it does not automatically display. Type your **Product Code** in the **Serial Number** section of the dialog. It should be noted that if you wish to install as demo software EVALUATION must be typed in the Serial Number portion of the dialog. Also if your Product Code indicated that you have purchased small format software and you try to install a large format printer a dialog will display indicating that you have selected the wrong printer. Click **Next**.



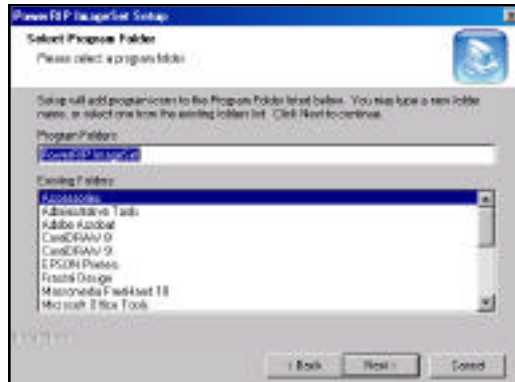
5. The **Select Components** dialog will display. You must select the components you wish to install i.e., your printers, PDF Generator, TIFF Generator.



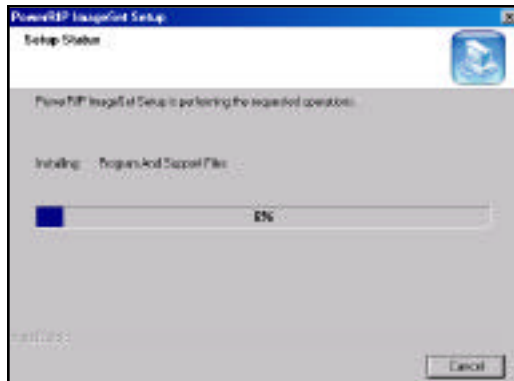
If you wish to change the destination folder click **Browse**. The **Choose Folder** dialog will display. Type the correct path. Click **OK**. The **Select Component** dialog will redisplay. Click **Next**.



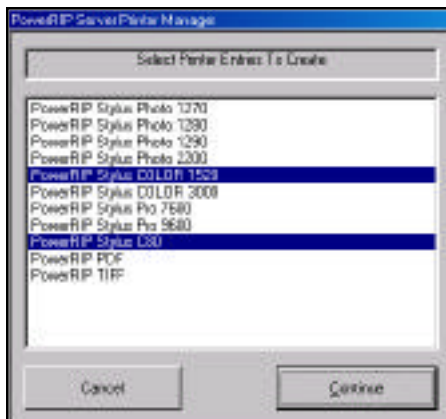
- The **Select Program Folder** dialog will display. You can type a new folder name or select an existing folder if you do not want to install in Program Folders. *Note: Program Folders is recommended.* Click **Next**.



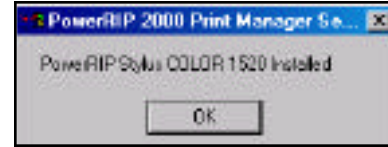
- The **PowerRIP ImageSet** software will start installing.



- The **PowerRIP Server Printer Manager** dialog will display. Select the output devices you wish to install. The items you selected in the Select Component dialog should be highlighted. Click **Continue**.

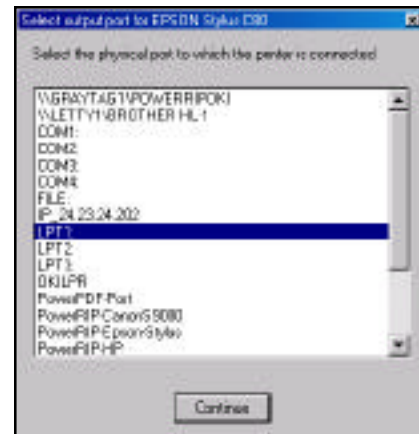


A dialog will display telling you the printer has been installed. Click **OK**.



You will also get a dialog telling you that PowerRIP PDF and PowerRIP TIFF has been installed if you selected them in the Print Manager dialog. Click **OK**.

- The **Select Output Port** dialog will display. The physical port that the printer is connected to should be selected. Click **Continue**.



- The **Setup Status** dialog will display until the software is done installing. The **InstallShield Wizard Complete** dialogs will display. Click **Finish**.

